

Dual-Axis Auto-Zero Servo-Inclinometer Model TSU



The TSU model servo-inclinometer is built for high accuracy tilt measurement, with a patented internal auto-zero system designed to practically eliminate the influence of temperature changes, shocks, vibrations and time drifts.

FEATURES:

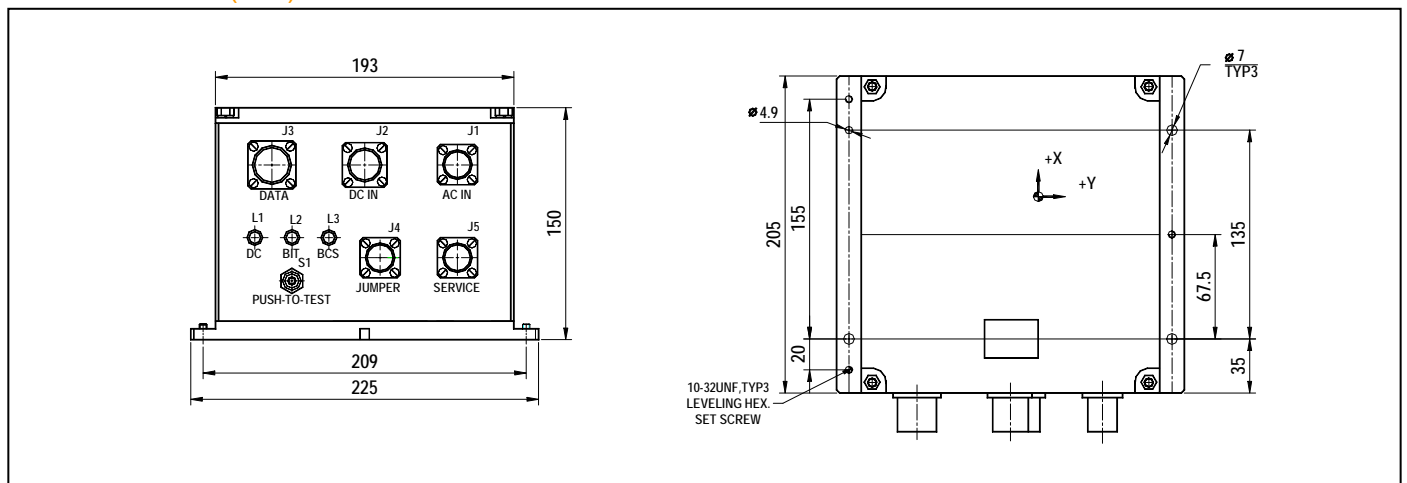
- Auto-Zero compensation at adjustable time intervals
- MIL-STD-810E qualification
- Dual axis measurement
- US patents 6,546,639 and 6,722,049.



SPECIFICATIONS

Measuring range	1° (pitch and roll)
Total error (over the full temperature range and the whole lifetime of the product, with no calibrations needed)	2σ < 0.0028° at +/-0.1° range 2σ < 0.0057° elsewhere
Resolution	0.0005° using RS422 communication channel 0.00003° using RS232 communication channel
Sensitive axis misalignment	< 0.1 deg
Power supply	220 VAC 50Hz or 110 VAC 60Hz or ±15 V @ 5 V
Output	RS422 according to ELTA protocol, and RS232
Response time	2 sec
Temperature range	-20 to +55°C, operating -20 to +71°C, survival
Mechanical shock survival	±10g, 11ms
Housing material	Base: SAE303 with passivation Cover: Epoxy coated 6061 Aluminum alloy
Weight	12 Kg

DIMENSIONS (mm)



Rev. D

© Singer Instruments & Control Ltd., 2005

WWW.SINGER-INSTRUMENTS.COM

Information furnished by Singer Instruments & Control is believed to be accurate and reliable. However, no responsibility is assumed by Singer Instruments & Control for its use, nor for any infringements of patents or other rights of third parties which may result from its use. No license is granted by implication or otherwise under any patent or patent rights of Singer Instruments & Control Ltd.

Singer Instruments & Control Ltd.

3 Yozma St., Tirat Carmel 39032, ISRAEL
yuval@singer-instruments.com

Tel: 972-4-857-8880
Fax: 972-4-857-8881